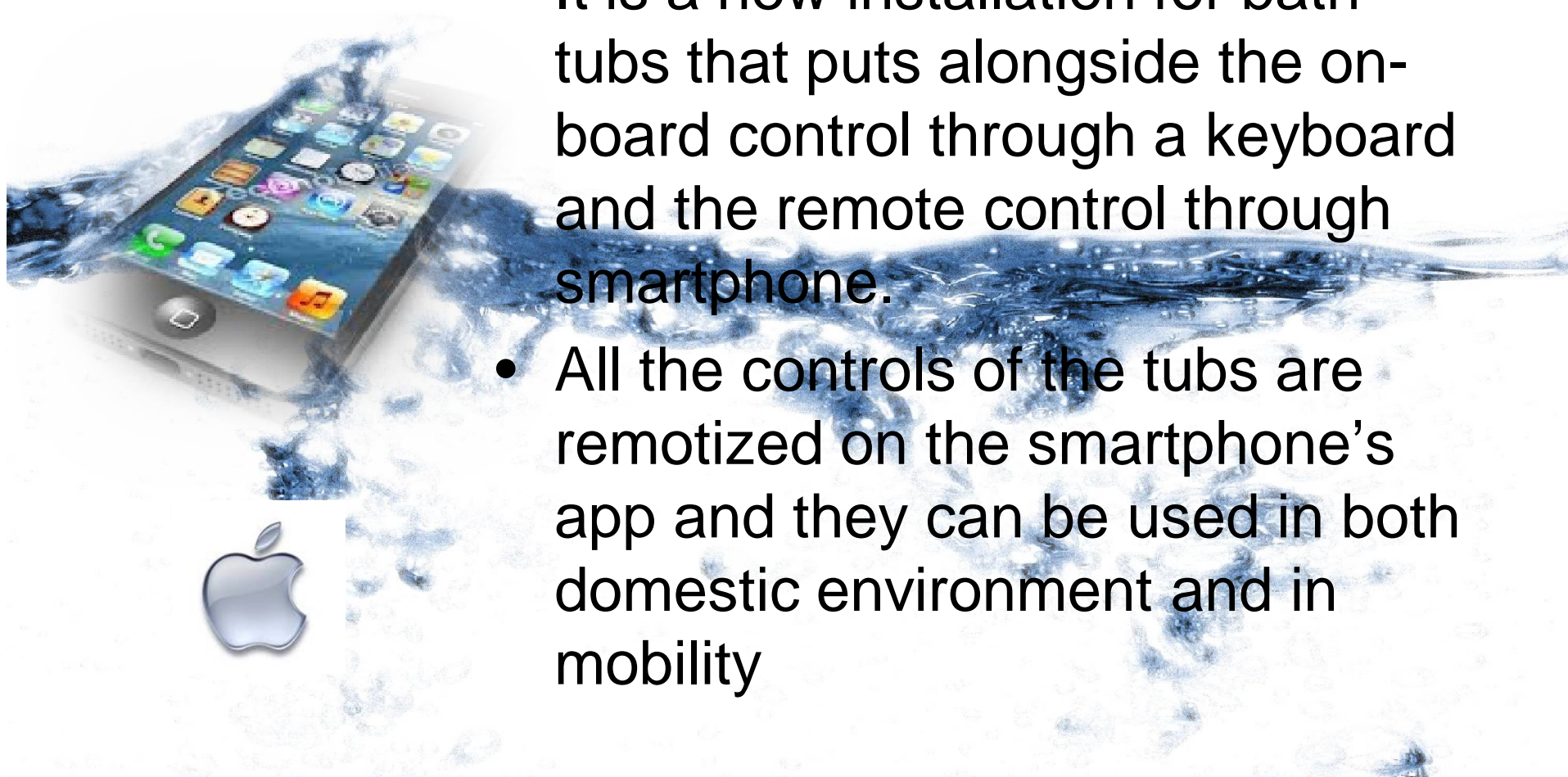




New system for running tubs by
local handling and through
smartphone

Automatization system for bathtubs with on-board control and through smartphone

- It is a new installation for bath tubs that puts alongside the on-board control through a keyboard and the remote control through smartphone.
- All the controls of the tubs are remotized on the smartphone's app and they can be used in both domestic environment and in mobility



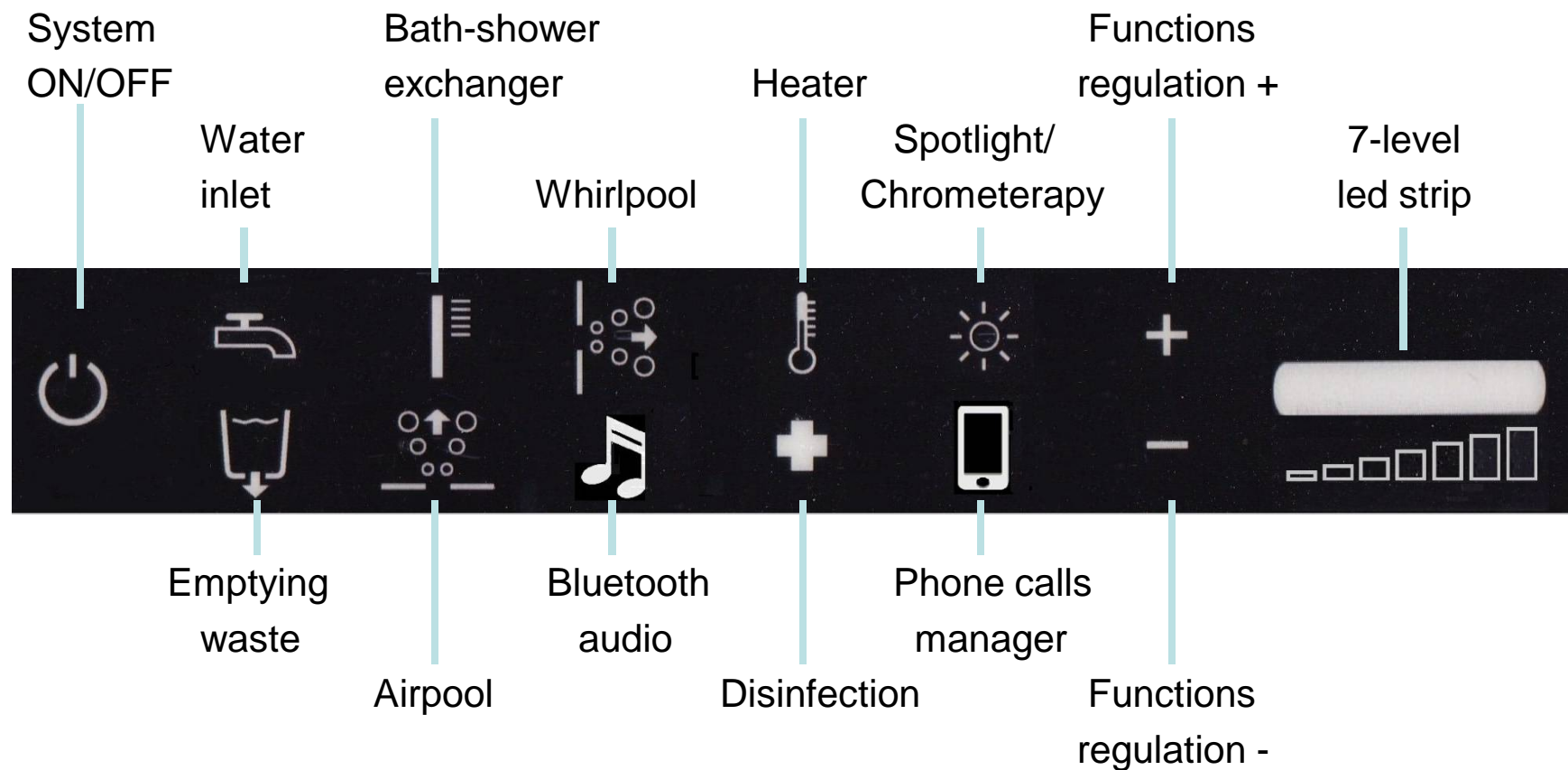
Features of the away-from-home control through smartphone via 3G-4G

- Away from home, you can send the command "autofill" from the smartphone via a remote server. The tub automatically switch on, fills and adjusts the water temperature as the setting.
- The App alerts you when the fill is completed.
- After filling, the tub maintains the temperature of the water until it is taken out local control.

Features of the home control (by on-board keyboard or smartphone connected via wifi)

- ON/OFF of the System
- Opening/closing of the electronic waste
- Running Water through electronic tap
- Temperature's adjustment
- Switching tub/shower
- Switching on/turning off of whirlpool
- Whirlpool's speed modulation (only from the on-board keyboard)
- Switching on/turning off of airpool and intensity adjustment
- Switching on/turning off of heater
- Disinfection's cycle
- Chrometherapy
- Managing audio from smartphone/tablet through Bluetooth
- Managing phone calls

On-board local backlit keyboard (customizable for our clients)



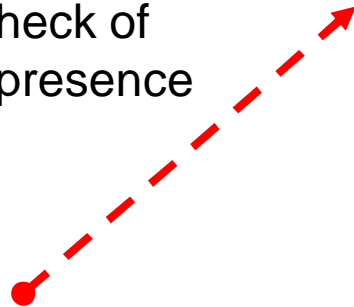
Smartphone App for remote control (customizable for our clients)



System Architecture

Remote communication of each tub with the associated smartphones is managed by El. Cond server

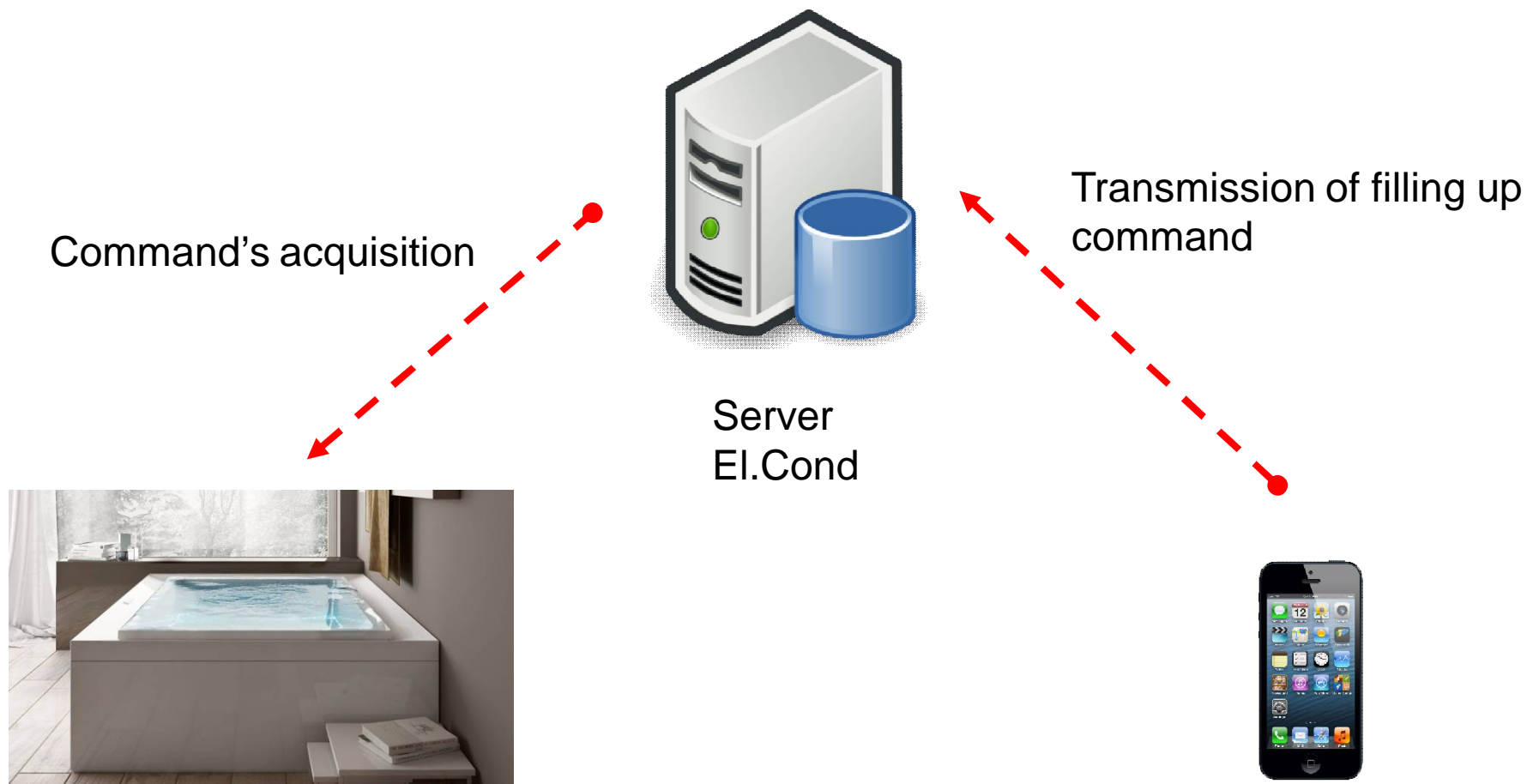
Recurrent check of
commands presence



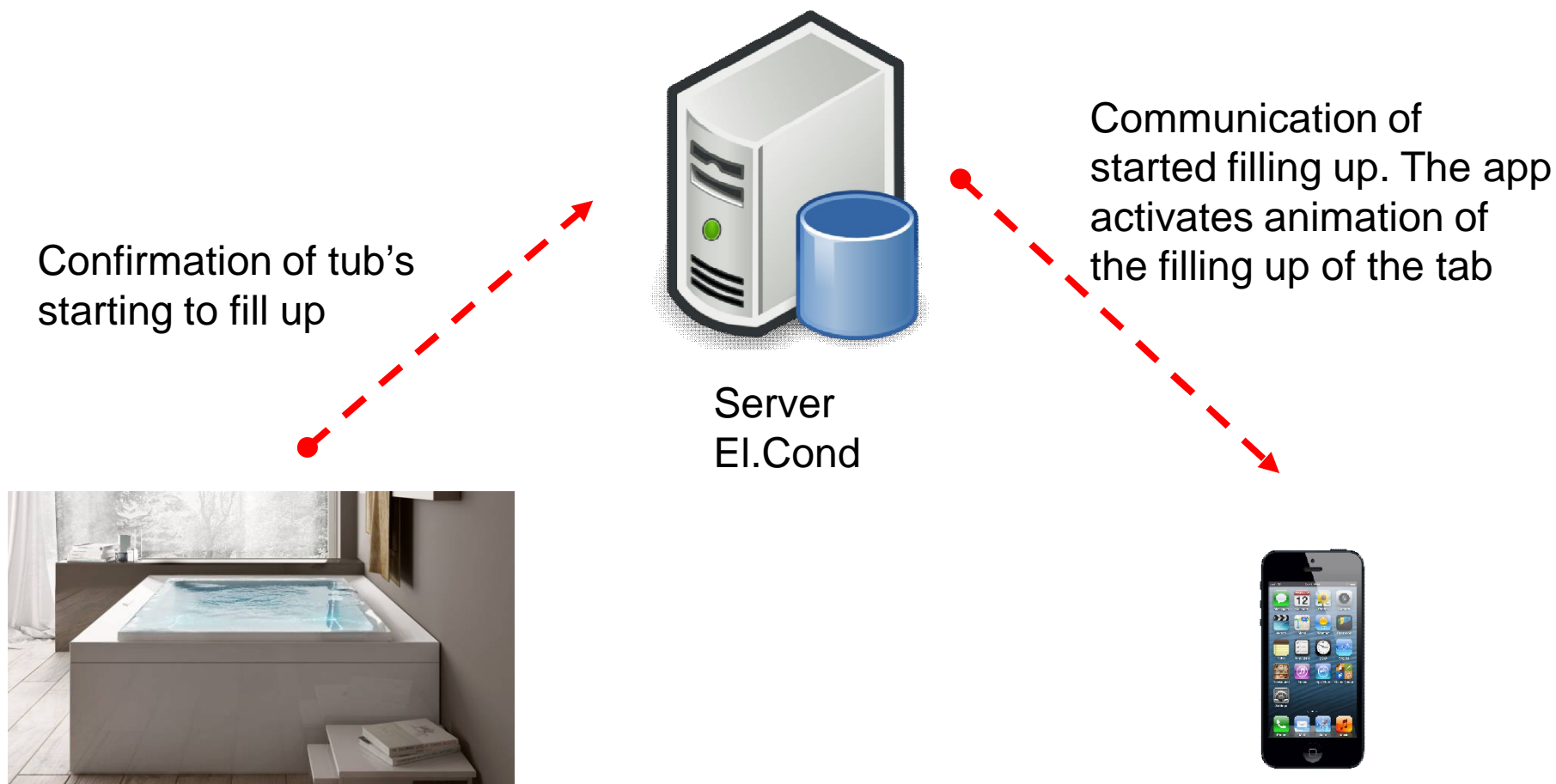
Server
El.Cond



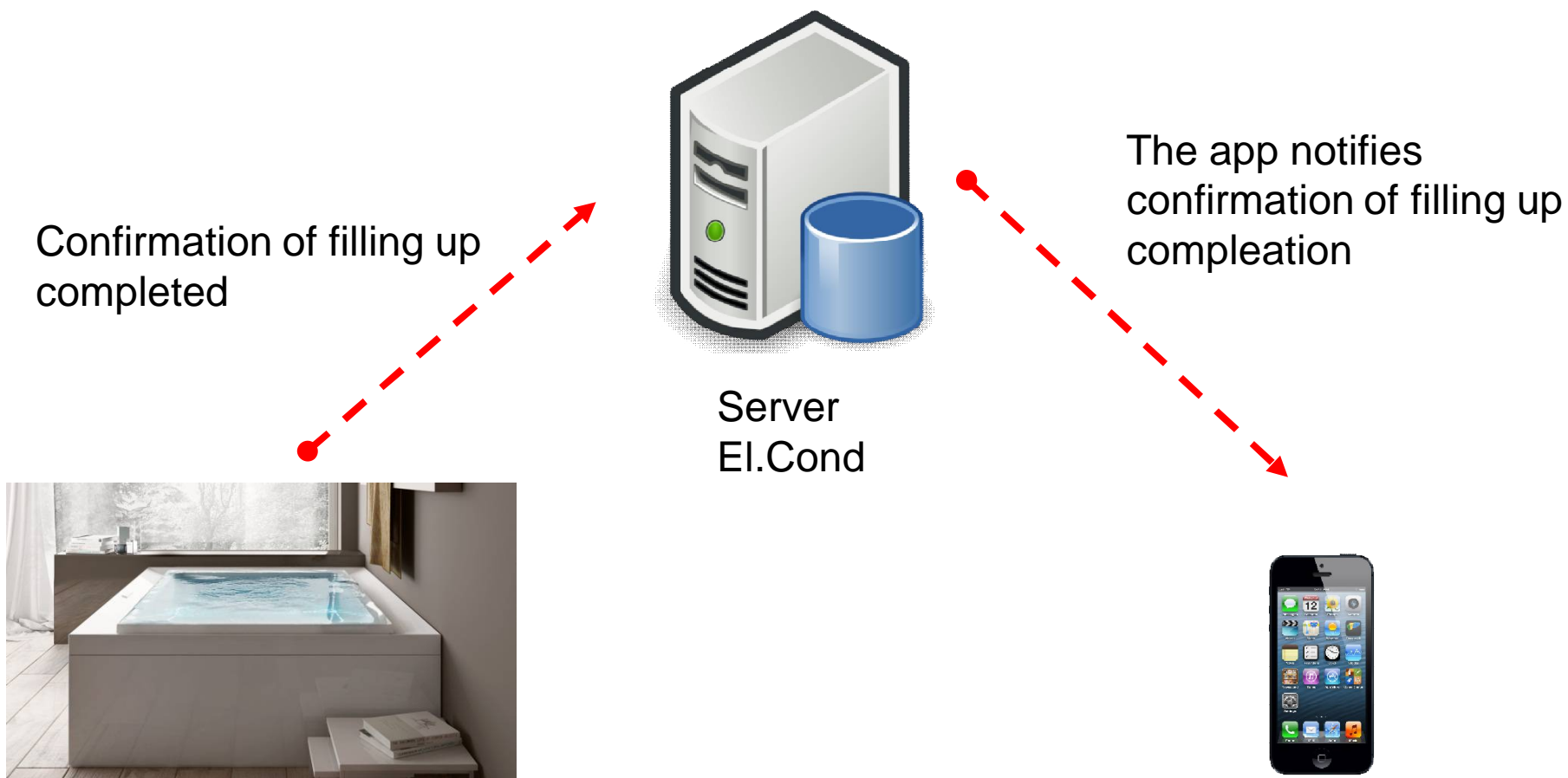
System Architecture



System Architecture



System Architecture



Requirements

- Internet connection for communication between the tub electronic control and the server EL.Cond.



- Smartphone enabled to 3G/4G data traffic



State of the art

- The system as described has been tested for several months.
- The system is certified CE and FFC.
- The system is ready for massive production.
- the system is modular, i.e. many functions can be added separately. If a function is not present, automatically it does not appears both on the keyboard and App.

Evolution scenarios of tubs control system

- ✓ Posting a profile for each family member with the possibility of memorising various combinations of temperatures.
- ✓ Statistical reports on the segmented use for geographical regions, product's type, seasons etc.
- ✓ Enablement and history of diagnostic logs

Main new benefits for the user

- **The pleasure of fill the bath at your favourite temperature wherever you are.**

You can activate the filling of the tub through a virtual tap in the smartphone while you go home or while you are relaxing on your sofa. Your smartphone will alert you when your bath is ready.

- **While you enjoy your bath, you can listen to your favorite music from any device through bluetooth and answer the phone.**

Benefits for the Company

- ✓ Innovation of the product range.
- ✓ The compact electronics makes it possible to equip with the system also tubs with reduced spaces.
- ✓ All connections to peripherals are wired outside the system enclosure, thus saving on installation times.
- ✓ Image: Company abreast of technological innovation and trends.
- ✓ Visibility: the app free download from the store increases the visibility of the company.
- ✓ The company can know the statistics of use of its products.
- ✓ The new automation system of the tubs enable future maintenance scenarios remotely (remote diagnostics).